

1963 - 1965 Corvette: Service Bulletin: Rear Suspension Crossmember Isolation Mounts Pulling Loose

Subject: Rear Suspension Crossmember Isolation Mounts Pulling Loose

Model and Year: 1963, 1964, 1965 Corvette

Source: Chevrolet Technical Service Bulletin

Bulletin No: TSB #1036

Section: IV

Date: September 15, 1964

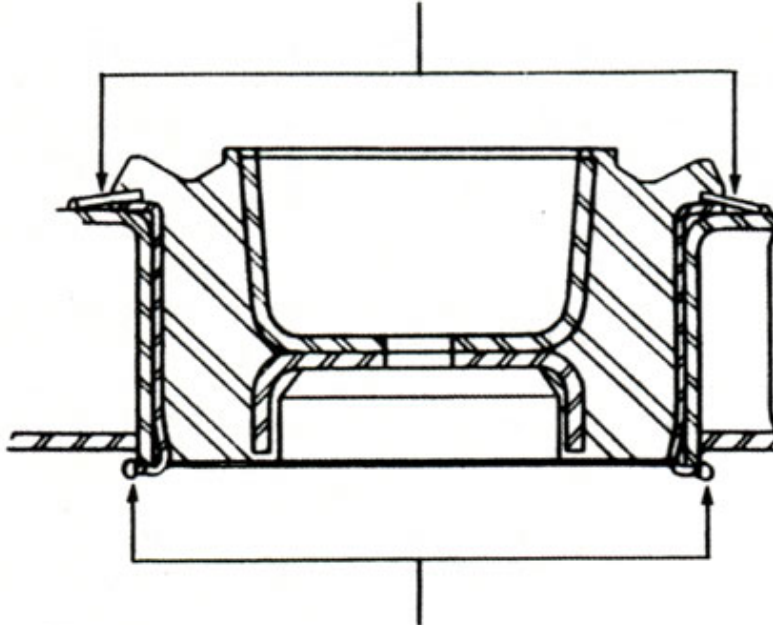
TO: ALL CHEVROLET SERVICE PERSONNEL

Under certain driving conditions on 1963, 1964 and 1965 Corvettes, the rear suspension isolation mount retaining tabs do not prevent the isolation mount from pulling out of the rear crossmember.

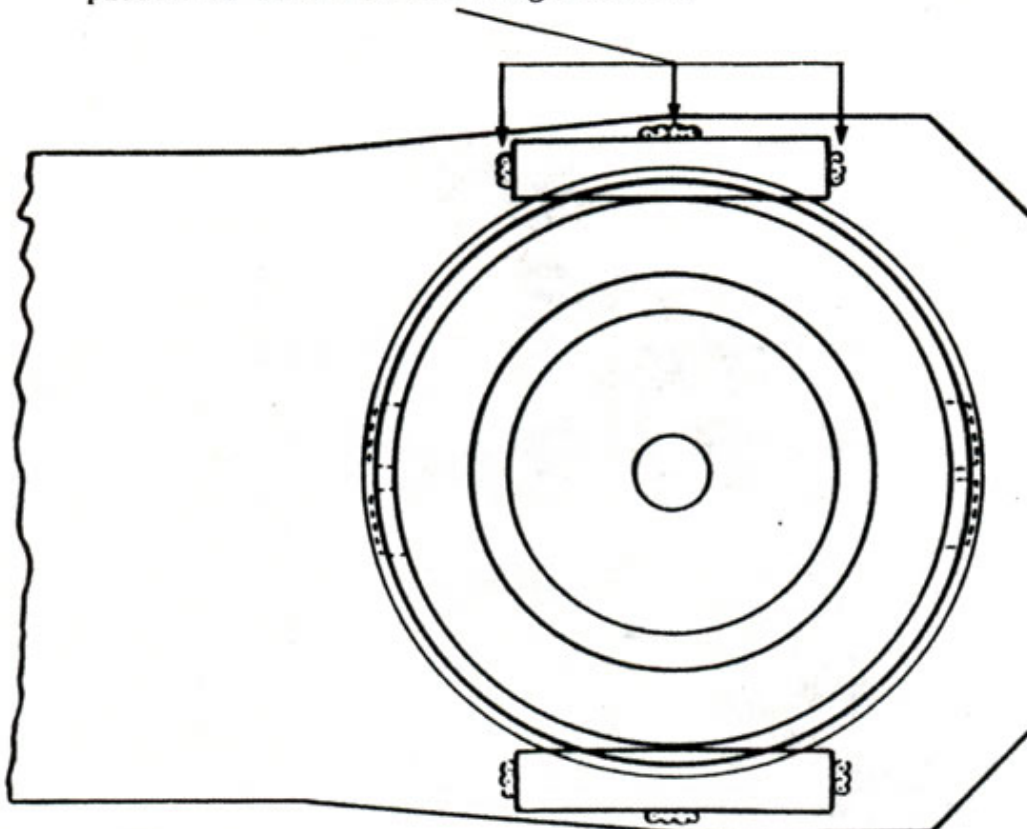
A new isolation mount, with increased retaining tab area, will be released in interim 1965. This new mount will service back to 1963 vehicles, and when released may be used if the above problem is encountered.

Meanwhile, the method outlined on the following page should be used whenever the loosening problem is encountered or new mounts are installed.

1. Cut rubber loose from outer shell and position two pieces of 1010 steel ($1/8" \times 1/2" \times 2"$) against shell.



2. Bend retaining tabs outward and weld ends of tabs to crossmember.
3. Place wet rag over mount to keep mount cool. Weld two pieces of mild steel at edges shown.



Online URL:

<https://www.corvetteactioncenter.com/tech/knowledgebase/article/1963-1965-corvette-service-bulletin-rear-suspension-crossmember-isolation-mounts-pulling-loose-971.html>