

1997 - 2011 Corvette: GM TechLink: Aftermarket Braided Stainless Steel Brake Lines



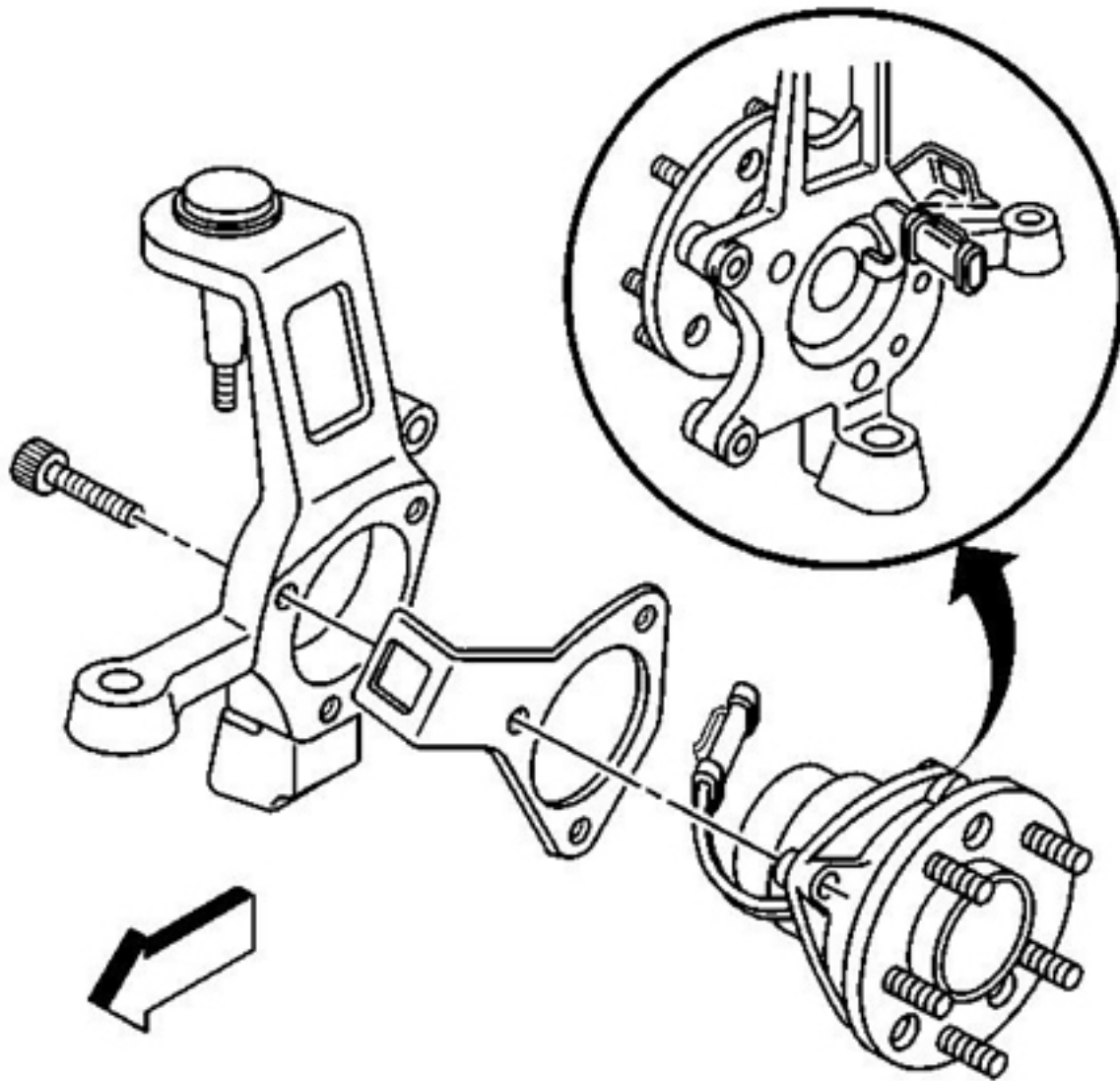
Source: GM Techlink

Date: November 2010

Subject: Aftermarket Braided Stainless Steel Brake Lines

Models: 1997 - 2011 Chevrolet Corvette

Aftermarket braided stainless steel brake lines installed (from the front calipers to the frame clips) on the 1997-2011 Corvette may cause interference with front wheel speed sensors. (Fig. 11)



(Fig. 11)

As a result of the interference, the amber Traction Control/Active Handling warning lamp and the ABS warning lamp may illuminate in the instrument cluster or Driver Information Center messages Service ABS, Service Active Handling and/or Service Traction Control may appear while driving. DTCs C1225/C0035 and/or C1226/C0040 (left and right front erratic wheel speed sensors) also may be set.

This condition typically occurs at lower speeds of approximately 35 mph (56 km/h) and under, and will usually occur more often over bumps while driving straight or during cornering.

Before beginning any diagnosis for this condition, the aftermarket braided stainless steel brake lines will have to be removed. This is a customer pay expense and should not be charged to warranty.

Diagnosis can continue after the original equipment rubber hoses are installed and after it is determined that the DTCs and other concerns still exist.

- *Thanks to Jeremy Richardson*

Online URL:

<https://www.corvetteactioncenter.com/tech/knowledgebase/article/1997-2011-corvette-gm-techlink-aftermarket-braided-stainless-steel-brake-lines-68.html>