

# 1996 Corvette: Service Bulletin: 3 - 2 Part Throttle Downshift Flare

**Subject:** Service Bulletin: 3 - 2 Part Throttle Downshift Flare (Replace 3 - 2 Solenoid)

**Model and Year:**

1996 BUICK ROADMASTER  
1996 CADILLAC FLEETWOOD  
1996 CHEVROLET CAMARO, CAPRICE, CORVETTE  
1996 PONTIAC FIREBIRD  
1996 OLDSMOBILE BRAVADA  
1996 CHEVROLET AND GMC C/K, M/L, S/T, G MODELS WITH HYDRA-MATIC 4L60-E (RPO M30)  
1996 HOLDEN COMMADORE "VS"  
**Source:** Chevrolet Dealer Service Bulletin  
**Bulletin Number:** 67-71-47

**\*\*IMPORTANT:** CANADIAN DEALERS SHOULD REPAIR TRANSMISSIONS FOLLOWING ESTABLISHED REPAIR PRACTICES.

**CONDITION:**

(FIGURES 1 AND 2)

SOME OWNERS OF THE ABOVE MODELS WITH A HYDRA-MATIC 4L60-E TRANSMISSION (BUILT BEFORE MAY 24, 1996/JULIAN DATE 6145) MAY EXPERIENCE AN ENGINE SPEED FLARE OF 1000-2000 RPM, DURING A PART THROTTLE DOWNSHIFT AT 19-31 MPH. THIS CONDITION WILL NOT SET ANY DTC'S (DIAGNOSTIC TROUBLE CODES).

**CAUSE:**

EXHAUST SEAT ON THE 3-2 CONTROL SOLENOID BACKING OUT.

**CORRECTION:**

(FIGURE 3)

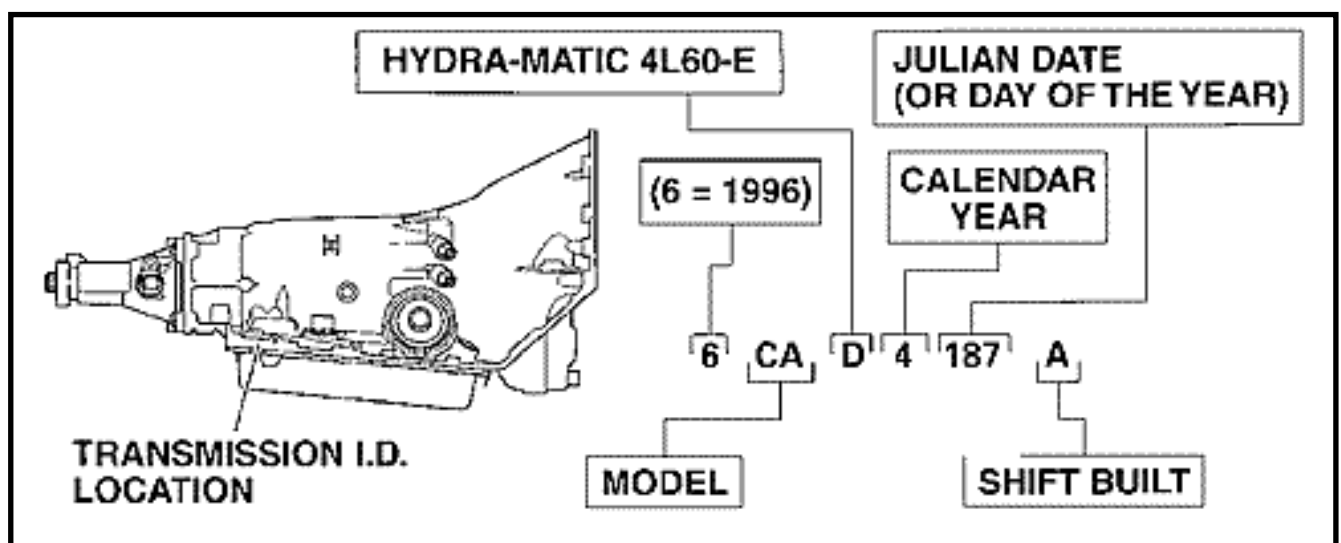
REPLACE THE 3-2 CONTROL SOLENOID. JULIAN DATE ON THE SOLENOID WILL BE MAY 13, 1996 (6134) OR LATER.

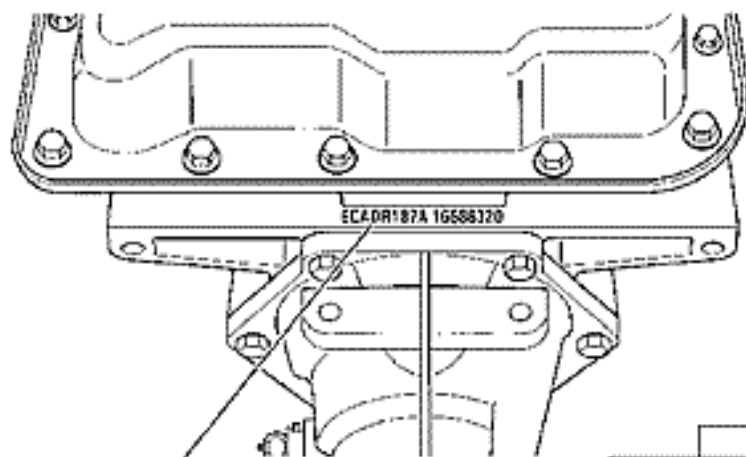
### **PARTS INFORMATION:**

NEW PART NUMBER DESCRIPTION  
24209121 SOLENOID, 3-2 CONTROL

PARTS ARE EXPECTED TO BE AVAILABLE ON JULY 1, 1996 FROM GMSPO

FIGURE 1 - HYDRA-MATIC 4L60-E TRANSMISSION IDENTIFICATION  
INFORMATION FIGURE 2 - HYDRA-MATIC 4L60-E TRANSMISSION  
IDENTIFICATION INFORMATION FOR TWO-PIECE CASE FIGURE 3 -  
LOCATION AND IDENTIFICATION OF THE 3-2 CONTROL SOLENOID ON THE  
CONTROL VALVE BODY





TRANSMISSION I.D.  
LOCATION

HYDRA-MATIC 4L60-E

JULIAN DATE  
(OR DAY OF THE YEAR)

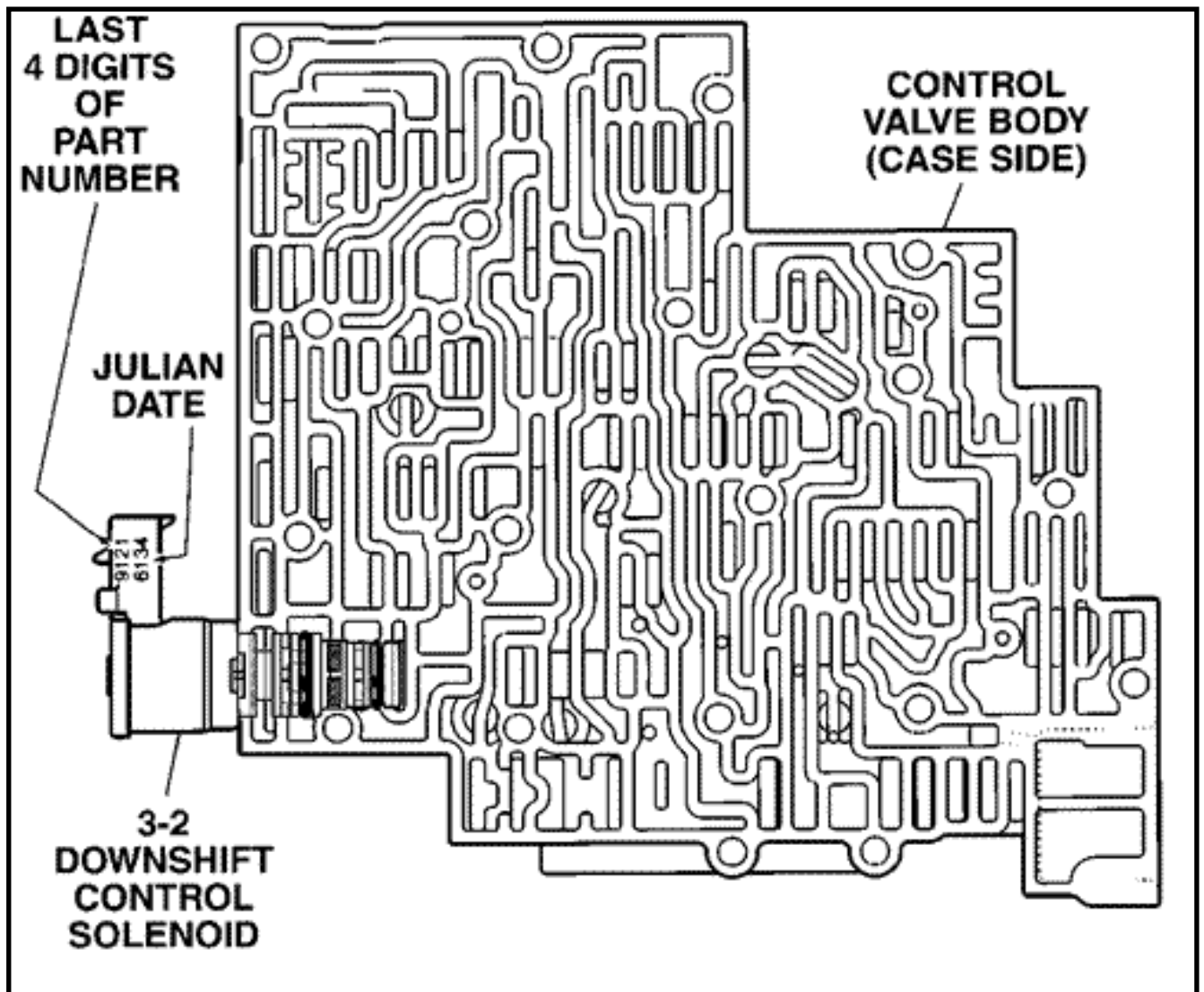
6 CA D 187 A 16588320

MODEL

SERIAL NO.

(6 = 1996)

SHIFT BUILT



General Motors bulletins are intended for use by professional technicians, not a "do-it-yourselfer". They are written to inform those technicians of conditions that may occur on some vehicles, or to provide information that could assist in the proper service of a vehicle. Properly trained technicians have the equipment, tools, safety instructions and know-how to do a job properly and safely. If a condition is described, do not assume that the bulletin applies to your vehicle, or that your vehicle will have that condition. See a General Motors dealer servicing your brand of General Motors vehicle for

information on whether your vehicle may benefit from the information.

**© Copyright General Motors Corporation. All Rights Reserved**

Online URL:

<https://www.corvetteactioncenter.com/tech/knowledgebase/article/1996-corvette-service-bulletin-3-2-part-throttle-downshift-flare-587.html>