

2017 - 2018 Corvette: Service Bulletin: #16-NA-296: Tire Performance and Characteristics

#16-NA-296: Tire Performance and Characteristics - (Jun 9, 2017)

Subject:				Tire Performance and Characteristics			
Brand:	Model:	Model Year:		VIN:		Engine:	Transmission:
		from	to	from	to		
Buick	Cascada, LaCrosse, Regal	2017	2017				
Cadillac	ATS, ATS-V, CT6, CTS, CTS-V, XT5	2017	2018				
Cadillac	XTS	2017	2017				
Chevrolet	Bolt EV, Cruze (VIN B), Impala, SS, Sonic	2017	2017				

Chevrolet	Camaro, Corvette	2017	2018				
GMC	Acadia	2017	2018				
<i>Involved Region or Country</i>				North America and N.A. Export Regions			

Every new GM vehicle has high-quality tires made by a leading tire manufacturer. See the owner’s manual for information regarding the tire warranty and where to get service. For additional information refer to the tire manufacturer.

The chart included in this bulletin lists vehicles that have been equipped with special tires that are categorized by High Performance Summer, Competition Oriented Summer, RunFlat All-Season, RunFlat Summer, and Sealant. These tire types have been optimized for specific performance attributes and as a result have special considerations that need to be understood and followed.

It is important that the dealership identify these tires to its customers and provide proper counsel to them on usage and limitations consistent with this bulletin.

SUMMER TIRES

High Performance Summer Tires (see “Summer Tire” column in chart)

Many General Motors high performance models come factory equipped with tires that are optimized for maximum dry and wet road performance while still retaining satisfactory tread life, excellent durability and low noise levels. In winter climates where snowfall may occur these tires may be found to provide less traction. Winter tires are a viable alternative that may greatly enhance winter driving.

Cold Weather Operation

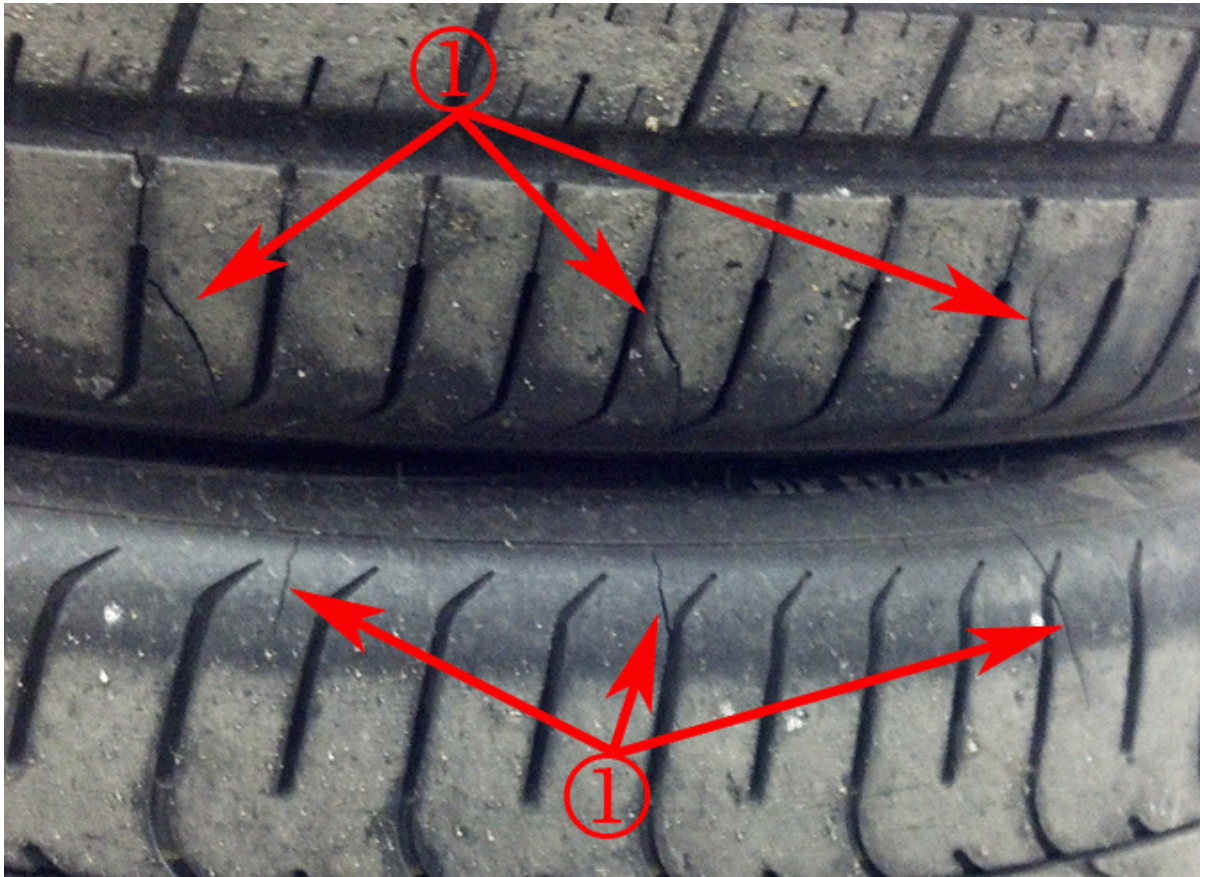
Important: Customers need to know that their vehicle is equipped with a high performance summer tire that will have reduced traction performance at temperatures below approximately 5°C (40°F). It is recommended that suitable winter tires (if available) be installed below this temperature. All of these tires are not intended to be driven on snow or icy road surfaces.

The rubber used in these tires loses flexibility and may develop surface cracks (1) in the tire tread/shoulder area at colder temperatures. Refer to the photos below for examples.

Important: While the cracking will not result in air loss, it is damaging to the tire. Tires that have been used in cold climates and exhibit tread cracks should be discarded. This is not a warrantable item if the customer has driven the car in temperatures below approximately 5°C (40°F).

Tire Surface Cracks





Surface cracks are cosmetic and will not result in a loss of air, however special tread and compounds used on these performance tires will cause a decrease in performance in cold climates. Driving with high performance summer tires on snow, ice or cold road surfaces may cause loss of control.

Refer to the latest version of Corporate Bulletin Number 04-03-10-013: Driving Characteristics of Rear Wheel Drive Vehicles and Available Winter Tires for further information on available replacement winter tires for cold climate operation. Additionally, dealers in the United States may call the GM Tire Program at 877-728-4737 for help with late season tire availability or substitutions.

Competition Oriented Summer Tires (see “Competition Tire” column in

chart)

For vehicles repaired under the Bumper-to-Bumper coverage (Canada Base Warranty coverage), use the following labor operation. Reference the Applicable Warranties section of Investigate Vehicle History (IVH) for coverage information.

Competition oriented tires are DOT approved for street use, but primary use would for track events and competitive driving. Competition oriented tires use a special tread pattern and compound that provide more grip than normal road tires. The minimum tread depth will be reached earlier than typical tires, resulting in reduced tire life. This special tread pattern and compound will have decreased performance in cold climates, heavy rain, and standing water. *It is recommended that winter tires be installed on the vehicle when driving at temperatures below approximately 10°C (50°F) or on ice or snow covered roads. Refer to the latest version of Corporate Bulletin Number 04-03-10-013 for additional information on winter tires.*

Important: Driving on wet roads, in heavy rain, or through standing water with competition oriented tires may cause hydroplaning and loss of control. Use extreme caution and drive slowly on wet roads. Driving with competition oriented tires on snow, ice, or cold road surfaces can cause loss of control or an accident. Competition oriented tires are summer season tires and are not intended to be driven on snow, ice, or road surfaces below 10°C (50°F). Do not drive a vehicle equipped with competition oriented tires in these conditions.

Important: *Track courses put high loads on tires operating at high speed, which can lead to tire failure if not inflated properly. Refer the customer to the vehicle specific owner's manual for specific information on track usage.*

Cold Weather Operation

Important: Competition oriented tires have rubber compounds that lose flexibility and may develop surface cracks in the tread area at temperatures below -7°C (20°F). Always store competition oriented tires indoors and at temperatures above -7°C (20°F) when not in use. If the tires have been subjected to -7°C (20°F) or less, let them warm up in a heated space to at least 10°C (50°F) for 24 hours or more before being installed or driving a vehicle on which they are installed. Do not apply heat or blow heated air directly on the tires. Always inspect tires before use.

Tire Surface Cracks





Surface cracks are cosmetic and will not result in a loss of air, however special tread and compounds used on these performance tires will cause a decrease in performance in cold climates. Driving with high performance summer tires on snow, ice or cold road surfaces may cause loss of control.

Refer to the latest version of Corporate Bulletin Number
04-03-10-013: Driving Characteristics of Rear Wheel Drive Vehicles

and Available Winter Tires for further information on available replacement winter tires for cold climate operation. Additionally, dealers in the United States may call the GM Tire Program at 877-728-4737 for help with late season tire availability or substitutions

Summer Tire Storage

It is recommended that High Performance and Competition Oriented Summer tires are stored indoors at temperatures above -7°C (20°F) when not in use. If the tires have been subjected to -7°C (20°F) or less, let them warm up in a heated space to at least 5°C (40°F) for 24 hours or more before being installed or driving a vehicle on which they are installed. Inflate the tires only after they have been warmed above 5°C (40°F). Do not place tires near heaters or heating devices used to warm the room where the tires are stored. Do not apply heat or blow heated air directly on the tires. Always inspect tires before use after being stored.

Run Flat Tires (see “Run Flat” column in chart)

Vehicles equipped with Run Flat tires typically do not come equipped with a spare tire, tire changing equipment, or place to store a tire in the vehicle.

Run-flat tires can be driven on with no air pressure. There is no need to stop on the side of the road to change the tire. Continue driving; however, do not drive too far or too fast. Driving on the tire may not be possible if there is permanent damage. To prevent permanent damage, the tire can be driven with no air pressure for up to 80 km (50 mi) at speeds slower than 80 km/h (50 mph). As soon as possible,

contact the nearest Chevrolet, Buick, GMC or Cadillac Dealership for inspection and repair or replacement.

When driving on a deflated run-flat tire, avoid potholes and other road hazards that could damage the tire and/or wheel beyond repair. When a tire has been damaged, or if driven any distance while on a deflated run-flat tire, check with an authorized GM servicing facility to determine whether the tire can be repaired or should be replaced. To maintain the run-flat feature, all replacement tires must be run-flat tires.

To locate the nearest Chevrolet, Buick, GMC or Cadillac Dealership, call Customer Assistance.

Self Sealing Tires (see “Self Sealing” column in chart)

Vehicles equipped with Self Sealing tires typically do not come equipped with a spare tire, tire changing equipment, or place to store a tire in the vehicle.

Self sealing tires have a material contained inside the tire that can seal punctures up to 6 mm (0.25 in) in the tread area. The tire may lose air pressure if the sidewall is damaged or if the tread puncture is too large. If the Tire Pressure Monitor System indicates the tire pressure is low, inspect the tire for damage and inflate it to the recommended pressure. If the tire is unable to maintain the recommended pressure, contact the nearest Chevrolet, Buick, GMC or Cadillac Dealership immediately for inspection and repair or replacement. To locate the nearest GM servicing facility, call GM Customer Assistance.

Important: Self sealing tires are not like run flats and can not be driven with no air pressure. Do not drive on a deflated self-sealing tire

as this could damage the tire. Make sure the tire is inflated to the recommended pressure or have it immediately repaired or replaced.

When tire replacement is needed replace with a self-sealing tire, because the vehicle typically does not come with a spare tire or tire changing equipment.

Low Profile Tires (see “Low Profile” column in the chart)

Low profile tires is a classification of tire based on the tire’s dimensions. These tires have a shorter sidewall or a lower aspect ratio than standard profile tires.

Important: Low-profile tires are more susceptible to damage from road hazards or curb impact than standard profile tires. Tire and/or wheel assembly damage can occur when coming into contact with road hazards like, potholes, or sharp edged objects, or when sliding into a curb. The GM Vehicle warranty does not cover this type of damage. Keep tires set to the correct inflation pressure and when possible, avoid contact with curbs, potholes, and other road hazards.

Tire Usage Chart for Bulletin

Note: *Some tires may not be available in all markets.*

Na	Mo	Tire	Ser	Tre	Sup	Tire	RP	Su	Co	Run	Self	Lo
----	----	------	-----	-----	-----	------	----	----	----	-----	------	----

me Plate	del	Size	vice Des c.	ad Typ e	plie r N ame	Tra de Na me	O	mm er Tire	mp etiti on Ori ente d	Flat	Seal Tire	w P rofi le
Bui ck	Reg al GS	255 /35 ZR 20	(97 Y)	HW 4	Pire lli	P Zer o	QI9	Y				Y
Cad illac	XT S	P24 5/4 0R2 0	95 V	AL 3	Bri dge ston e	Pot enz a R E97 AS	RA L					Y
Che vrol et	Imp ala	P24 5/4 0R2 0	95 V	AL 3	Bri dge ston e	Pot enz a R E97 AS	RA L					Y
Bui ck	Cas cad a	P24 5/4 0R2 0	95 V	AL 3	Bri dge ston e	Pot enz a R E97 AS	RA L					Y
Che vrol et	Che v SS	245 /40 R19	98 Y	HW 4	Bri dge ston e	Pot enz a R E05 0A	RJ8	Y				Y
Che vrol	Che v	275 /35	100 Y	HW 4	Bri dge	Pot enz	RJ8	Y				Y

et	SS	R19			ston e	a R E05 0A						
Cad illac	AT S	225 /35 R19	88 Y	RF 4	Bri dge ston e	Pot enz a R E05 0A RF T	RJP , SD 2	Y		Y		Y
Cad illac	AT S	255 /30 R19	91 Y	RF 4	Bri dge ston e	Pot enz a R E05 0A RF T	RJP , SD 2	Y		Y		Y
Cad illac	AT S	225 /40 R18	92 V	RF 3	Mic heli n	Pri mac y M XM 4 ZP	RB 7			Y		Y
Cad illac	AT S	225 /40 RF 18	88 W	RF 4	Bri dge ston e	Pot enz a R E05 0A RF T	QF N	Y		Y		Y
Cad illac	AT S	255 /35	90 W	RF 4	Bri dge	Pot enz	QF N	Y		Y		Y

		RF 18			ston e	a R E05 0A RF T						
Cad illac	AT S	P22 5/4 5R1 7	90 V	RF 3	Mic heli n	Pri mac y M XM 4 ZP	RA 6			Y		
Cad illac	AT S - Cou pe	225 /40 RF 18	88 W	RF 4	Bri dge ston e	Pot enz a R E05 0A RF T	QF N, XB Z	Y		Y		Y
Cad illac	AT S - Cou pe	255 /35 RF 18	90 W	RF 4	Bri dge ston e	Pot enz a R E05 0A RF T	QF N, XB Z	Y		Y		Y
Cad illac	AT S - Cou pe	255 /35 R18	90 V	RF 3	Con tine ntal	Pro Con tact RX	QL C			Y		Y
Cad illac	AT S - Cou pe	225 /40 R18	88 V	RF 3	Con tine ntal	Pro Con tact	QL C			Y		Y

	pe					RX						
Cadillac	AT S-V	255 /35 ZR18	(94 Y)	HW4	Michelin	Pilot Super Sport	R65, XB0	Y				Y
Cadillac	AT S-V	275 /35 ZR18	(99 Y)	HW4	Michelin	Pilot Super Sport	R65, XB0	Y				Y
Cadillac	AT S-V Coupe	255 /35 ZR18	(94 Y)	HW4	Michelin	Pilot Super Sport	R65, XB0	Y				Y
Cadillac	AT S-V Coupe	275 /35 ZR18	(99 Y)	HW4	Michelin	Pilot Super Sport	R65, XB0	Y				Y
Cadillac	CTS	P245/45R17	(95 V)	RF3	Bridgestone	Potenza RE97AS RFT	RHN			Y		
Cadillac	CTS	P245/45R18	(93 V)	RF3	Pirelli	P-Zero Nero	RHP			Y		Y

						A/S R-F						
Cadillac	CTS	255/35 R19	(96 V)	RF3	Pirelli	P7 All Season R-F	RHS, SD2			Y		Y
Cadillac	CTS	245/40 R18	(93 Y)	RF4	Pirelli	P-Zero R-F	RKK, RMO	Y		Y		Y
Cadillac	CTS	275/35 R18	(95 Y)	RF4	Pirelli	P-Zero R-F	RKK	Y		Y		Y
Cadillac	CTS-V	265/35 ZR19	(98 Y)	HW4	Michelin	Pilot Sport	R64, XB6	Y				Y
Cadillac	CTS-V	295/30 ZR19	(100Y)	HW4	Michelin	Pilot Sport	R64, XB6	Y				Y
Chevrolet	Camaro	245/40 R20	95 V	RF3	Goodyear	Eagle F1 Asymmetric A/S	R29			Y		Y

						Ro F						
Che vrol et	Ca mar o	245 /40 ZR 20	95 Y	RF 4	Go ody ear	Eag le F1 Asy mm etri c 3 Ro F	R0 F	Y		Y		Y
Che vrol et	Ca mar o	275 /35 ZR 20	98 Y	RF 4	Go ody ear	Eag le F1 Asy mm etri c 3 Ro F	R0 F	Y		Y		Y
Che vrol et	Ca mar o LT	245 /50/ R18	100 V	AL 3	Go ody ear	Eag le S port A/S	R0 H					Y
Che vrol et	Ca mar o LT	245 /40/ R20	95 V	RF 3	Go ody ear	Eag le F1 Asy mm etri c A/S EM	R29			Y		Y

						T						
Chevrolet	Camaro LT 1L E	275 /35/ ZR 20 (Rear)	98 Y	RF 4	Goodyear	Eagle F1 Asymmetric 3 Roof	R0 F	Y			Y	Y
Chevrolet	Camaro SS 1L E, ZL 1	285 /30/ ZR 20 (Front)	(95 Y)	HW 4	Goodyear	Eagle F1 SuperCar	R0 G	Y				Y
Chevrolet	Camaro SS 1L E, ZL 1	305 /30/ ZR 20 (Rear)	(99 Y)	HW 4	Goodyear	Eagle F1 SuperCar	R0 G	Y				Y
Chevrolet	Camaro ZL 1 1L E	305 /30/ R19 (Front)	(98 Y)	HW 5	Goodyear	Eagle F1 SuperCar 3R	R6 O	Y				Y

Chevrolet	Camaro ZL1 LE	325/30/ZR19 (Rear)	(101Y)	HW5	Goodyear	Eagle F1 SuperCar 3R	R6O	Y				Y
Chevrolet	Cruze	P225/40R18	88V	AL3	Michelin	Primacy MX4	REW					Y
G2 KX-Z	Bolt	215/50R17	91H	AL S-S	Michelin	Energy Saver A/S	QB M				Y	
G2 KX-Z	Bolt	215/50R17	91H	HW1-S	Michelin	Primacy 3	QB W	Y			Y	
Chevrolet	SONIC	215/45ZR18	93Y	AL3	Continental	ExtremeContact DWS	R0M					Y
Cadillac	CT6	245/40R20	95W	AL3	Goodyear	Eagle Touring	QP1					Y
Cadillac	CT6	245/40	(99Y)	HW4	Pirelli	PZero	RE2	Y				Y

		ZR 20 XL				o						
Cadillac	CT6	245/40 ZR20	99Y	HW4	Pirelli	PZero	5EH	Y				Y
Cadillac	XT5	235/55 R20	102W	HW4	Continental	Cross Contact UHP	QJO	Y				
Cadillac	XT5	235/65 R18	106H	HW3	Michelin	Primacy SUV	R93	Y				
GM C	Acadia	235/55 R20	102W	HW4	Continental	Cross Contact UHP	QJO	Y				
GM C	Acadia	235/65 R18	106H	HW3	Michelin	Primacy SUV	R93	Y				
Chevrolet	Corvette	P245/40Z R18	(93Y)	RF4	Michelin	Pilot Super Sport	XBK	Y		Y		Y

						zp						
Chevrolet	Corvette	P285/35ZR19	(99Y)	RF4	Michelin	Pilot Super Sport zp	XBK	Y		Y		Y
Chevrolet	Corvette	P285/30ZR19	(94Y)	RF4	Michelin	Pilot Super Sport zp	XFK	Y		Y		Y
Chevrolet	Corvette	P335/25ZR20	(99Y)	RF4	Michelin	Pilot Super Sport zp	XFK	Y		Y		Y
Chevrolet	Corvette	P285/30ZR19	(94Y)	RF5	Michelin	Pilot Sport Cup 2 zp	XFM	Y	Y	Y		Y
Chevrolet	Corvette	P245/35ZR19	(89Y)	RF4	Michelin	Pilot Super Sport zp	XFJ	Y		Y		Y
Chevrolet	Corvette	P285/35ZR19	(95Y)	RF4	Michelin	Pilot Super Sport zp	XFJ	Y		Y		Y

et	e	0Z R20			n	per Spo rt zp						
Che vrol et	Cor vett e	P33 5/2 5Z R20	(99 Y)	RF 5	Mic heli n	Pilo t Sp ort Cup 2 zp	XF M	Y	Y	Y		Y
Bui ck	La Cro sse	P24 5/4 0R2 0	95 V	AL 3	Bri dge ston e	Pot enz a R E97 AS	RA L					Y

Customer Information

Please share this information with the customer, including a copy of this message.

<i>Version</i>	2
<i>Modified</i>	June 9, 2017 – Added the 2018 Model Year to select vehicles and updated the Camaro information in the Tire Usage Chart.

Online URL:

<https://www.corvetteactioncenter.com/tech/knowledgebase/article/2017-2018-corvette-service-bulletin-16-na-296-tire-performance-and-characteristics-1366.html>