

2017 - 2018 Corvette: Service Bulletin: #16-NA-330: Information for Corvette Aero Packages

#16-NA-330: Information for Corvette Aero Packages - (April 19, 2017)

Subject: Information for Corvette Aero
Packages

Brand:	Model:	Model Year:		VIN:		Engine:	Transmi
		from	to	from	to		ssion:
Chevrolet	Corvette	2017	2018				

Involved Region or Country

North America and N.A. Export
Regions

Additional Options (RPO)

Equipped with Performance
Package RPOs CFV, CFZ or Z07

Condition

This communication is to inform the
pre-delivery technician which aero
components are to be installed on
the 2017 - 2018 Corvette during the
pre-delivery inspection (PDI)
process.

Cause

This may be due to the various
ground effect parts that make up the
aero packages.

Correction

Please confirm the correct aero components are installed during the

PDI process. Use the photos and tables below to confirm the correct aero parts were shipped and installed on the vehicle prior to delivery.

Important: The tall end caps and clear bridge are for track use *ONLY.DO NOT* install during PDI.

SPLITTER



Small



Large

END CAPS

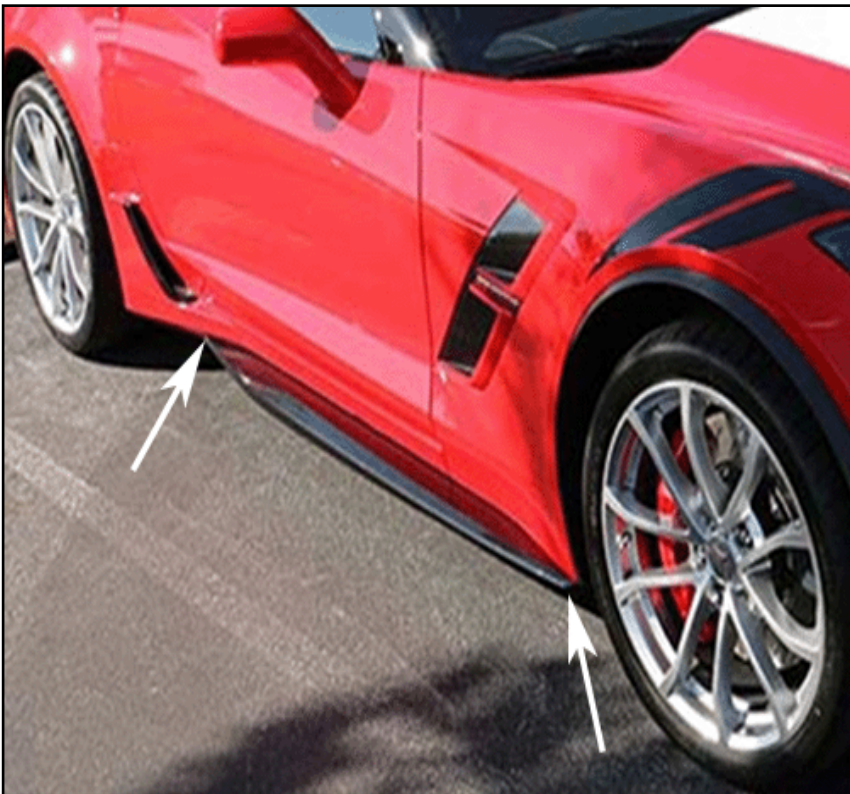


Short



Tall

ROCKERS



Short



Long

WICKERS

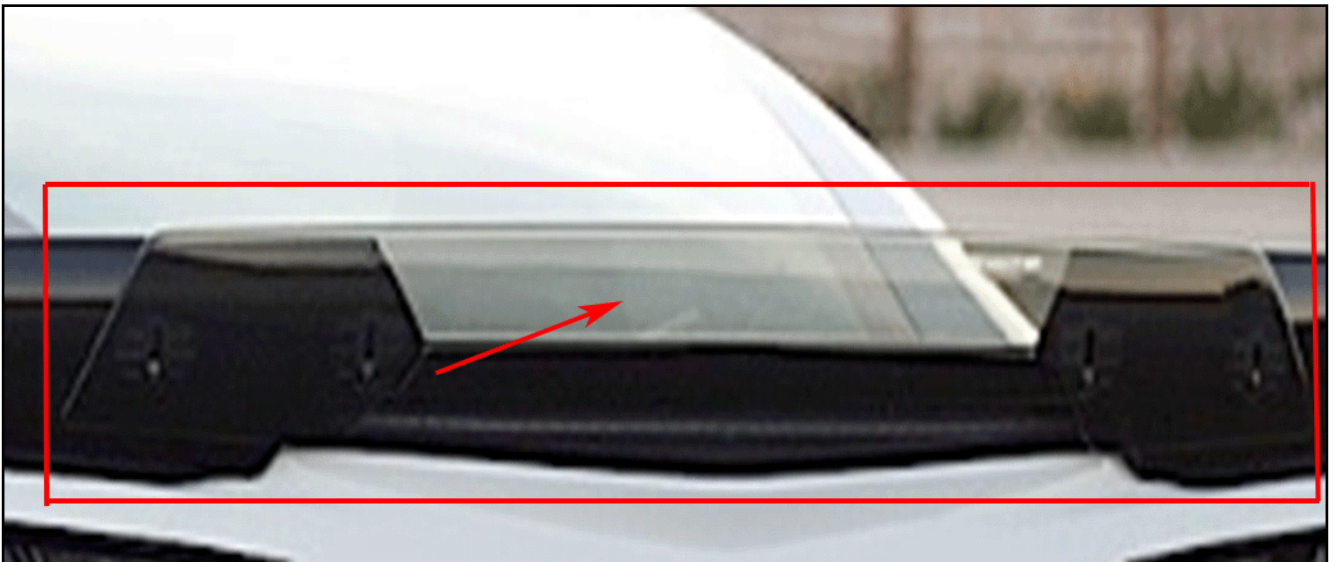


Short

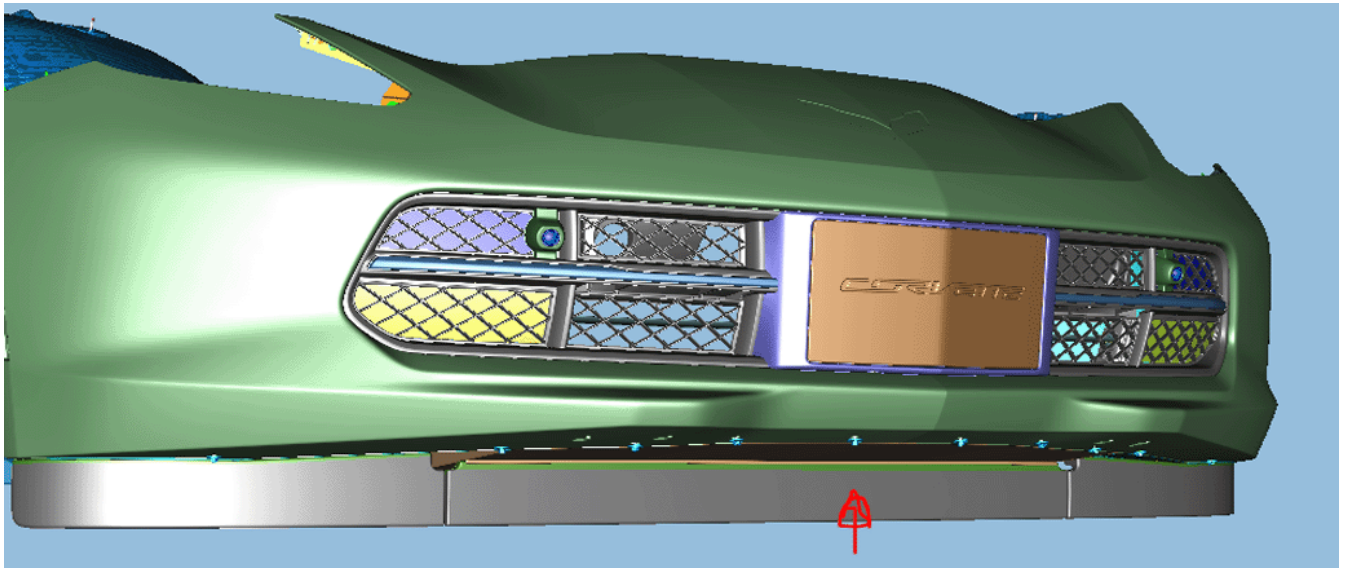


Tall

CLEAR BRIDGE



FRONT CENTER DEFLECTOR



STINGRAY						
	<i>SPLITTER</i>	<i>END CAPS</i>	<i>ROCKERS</i>	<i>WICKERS</i>	<i>CLEAR BRIDGE</i>	<i>FRONT CENTER DEFLECTOR</i>
<i>No CFV/Z</i>	None	None	None	None	None	Yes
<i>With CFV/Z</i>	Large	Small	Large	Low	Yes	No
<i>With Z07</i>	N/A	N/A	N/A	N/A	N/A	N/A
<i>MY18 Carbon Edition Z30</i>	N/A	N/A	N/A	N/A	N/A	N/A
<i>MY18 Carbon Edition Z30 & Z07</i>	N/A	N/A	N/A	N/A	N/A	N/A

Z51						
	<i>SPLITTE R</i>	<i>END CAPS</i>	<i>ROCKER S</i>	<i>WICKER S</i>	<i>CLEAR BRIDGE</i>	<i>FRONT CENTER DEFLEC TOR</i>
<i>No CFV/Z</i>	None	None	None	None	None	No
<i>With CFV/Z</i>	Large	Small	Long	Low	Yes	No
<i>With Z07</i>	N/A	N/A	N/A	N/A	N/A	N/A
<i>MY18 Carbon Edition Z30</i>	N/A	N/A	N/A	N/A	N/A	N/A
<i>MY18 Carbon Edition Z30 & Z07</i>	N/A	N/A	N/A	N/A	N/A	N/A

GS						
	<i>SPLITTE R</i>	<i>END CAPS</i>	<i>ROCKER S</i>	<i>WICKER S</i>	<i>CLEAR BRIDGE</i>	<i>FRONT CENTER DEFLEC TOR</i>
<i>No CFV/Z</i>	Small	None	Short	Low	None	Yes
<i>With CFV/Z</i>	Large	Small	Long	High	None	No

<i>With Z07</i>	Available w or w/o CFV/Z, no aero changes driven by Z07					
<i>MY18 Carbon Edition Z30</i>	Large	Small	Long	Integrated	None	No
<i>MY18 Carbon Edition Z30 & Z07</i>	Large	Small	Long	Integrated	None	No

Z06						
	<i>SPLITTER</i>	<i>END CAPS</i>	<i>ROCKERS</i>	<i>WICKERS</i>	<i>CLEAR BRIDGE</i>	<i>FRONT CENTER DEFLECTOR</i>
<i>No CFV/Z</i>	Small	None	Short	Short	None	Yes
<i>With CFV/Z</i>	Large	Small	Long	Tall	None	No
<i>With Z07</i>	Large	Large	Long	Tall	Yes	No
<i>MY18 Carbon Edition Z30</i>	Large	Small	Long	Integrated	None	No
<i>MY18 Carbon Edition Z30 &</i>	Large	Large	Long	Integrated	Yes	No

Z07						
-----	--	--	--	--	--	--

<i>Version</i>	3
<i>Modified</i>	<p>Feb. 21, 2017 – Added Front Center Deflector picture and Updated the tables to add Front Center Deflector information.</p> <p>April 19, 2017 – Added the 2018 Model Year and updated the information in the aero component tables.</p>

Online URL:

<https://www.corvetteactioncenter.com/tech/knowledgebase/article/2017-2018-corvette-service-bulletin-16-na-330-information-for-corvette-aero-packages-1314.html>